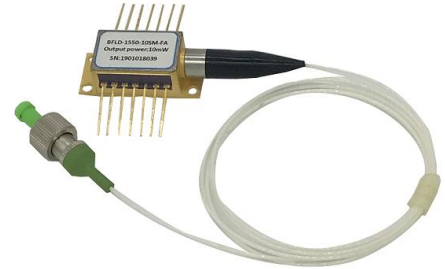


1060nm SLED Laser Diode

1. Features:

- 1060nm SLED;
- 14PIN Butterfly package;
- 5mW High output power;
- Built-in TEC and Monitor PD;

Reliability: Telcordia GR-468. RoHS



2. Applications:

- Fiber optic gyroscope system;
- Fiber optic sensing system;
- Optical equipment system.

3. Absolute Maximum Ratings

Parameter	Symbol	Min.	Max.	Unit
LD Reverse current	I_R	-	2	V
LD Forward current	I_F	-	250	mA
MPD Reverse voltage	V_{MPD}	-	20	V
Thermoelectric cooler voltage	V_{TEC}	-	2.5	V
Thermoelectric cooler current	I_{TEC}	-	1.5	A
Thermistor monitoring temperature	T_{RT}	-40	125	°C
Case temperature	T_C	-40	85	°C
Storage temperature	T_{STG}	-40	85	°C
Storage humidity	-	5	85	%RH
Electro static discharge (ESD)	V_{ESD}	-	500	V
Lead soldering temperature	S_{TEMP}	-	260	°C
Lead soldering time	S_{TIME}	-	10	sec

4. Electro-Optical Characteristics(25°C laser temperature):

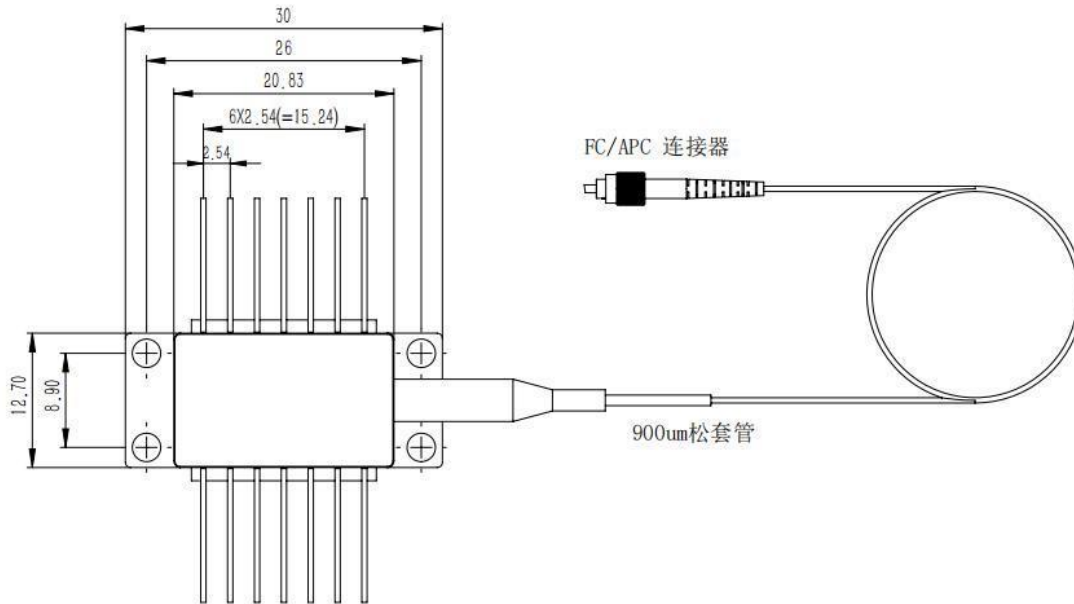
Parameter	Symbol	Condition	Min.	Typ.	Max.	Unit
Center wavelength	λ_C	$T_L=15\sim 35^\circ\text{C}$ CW	1050	1060	1070	nm
Optical output power	P_O	$T_L=25^\circ\text{C}$	-	5	-	mW
Threshold current	I_{TH}	$T_L=25^\circ\text{C}$	-	50	70	mA
Operating voltage	V_{OP}	$I_{OP}= 200\text{mA}(\text{CW})$	-	-	1.7	V
Operating current	I_{OP}	-	-	200	250	mA
-3dB Spectral width	$\Delta\lambda$	-	15	20	-	nm

Ripple coefficient	m	-	-	0.2	-	dB
MPD Reverse voltage	V_{MPD}	-	-	5	-	V
MPD Responsivity	I_{MON}/P_{OP}	-	1	-	30	$\mu A/mW$
Thermistor BETA Value	β	-	3500	3930	4100	K
Thermistor current	I_{THER}	-	-	-	0.2	mA
Variable temp. test change rate	$\Delta P_T/P_{OP}$	$T_C: -20\sim 60^\circ C$		-	15%	-
Room temp. power change rate	$\Delta P_T/P_{OP}$	$T_{LD} = 25^\circ C, t=30min$		-	5%	-

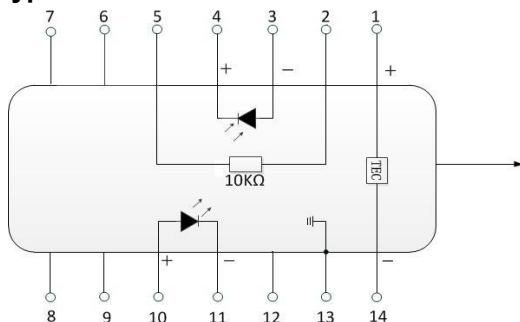
5. Optical Fiber Specifications:

Parameters	Description
Fiber type	Hi1060 or PM980
Pigtail type	900 μm loose tube
Pigtail length	$1.0 \pm 0.1m$
Connector type	FC/APC

6. Package drawing&PIN-OUT Definition(Unit:mm):



Type 2



PIN	Description	PIN	Description
1	TEC(+)	14	TEC(-)
2	Thermistor	13	Case Ground
3	PD Monitor Anode (-)	12	NC
4	PD Monitor Cathode (+)	11	Laser Cathode (-)
5	Thermistor	10	Laser Anode (+)
6	NC	9	NC
7	NC	8	NC

7. Type Optical spectrum



8. Ordering Information:

BFSLD	-XXXX	-X	XX	-XX	X
Laser type	Wavelength	Output power	Fiber type	Connector	PIN-OUT
SLED	1060: 1060nm	5: 5mW	SM: Hi1060 PM : PM980	FA : FC/APC Other	NULL: 14PIN Type 2 Customized(10PIN)

E.g.:BFSLD-1060-5SM-FA (Order information: 1060nm SLED laser diode with 5mW output power, and SM Hi1060 fiber with FC/APC connector, PIN-OUT is Type 2).